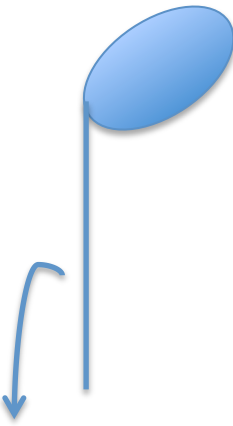
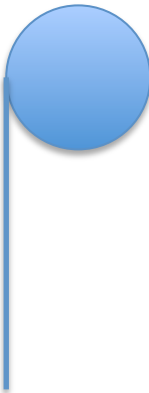





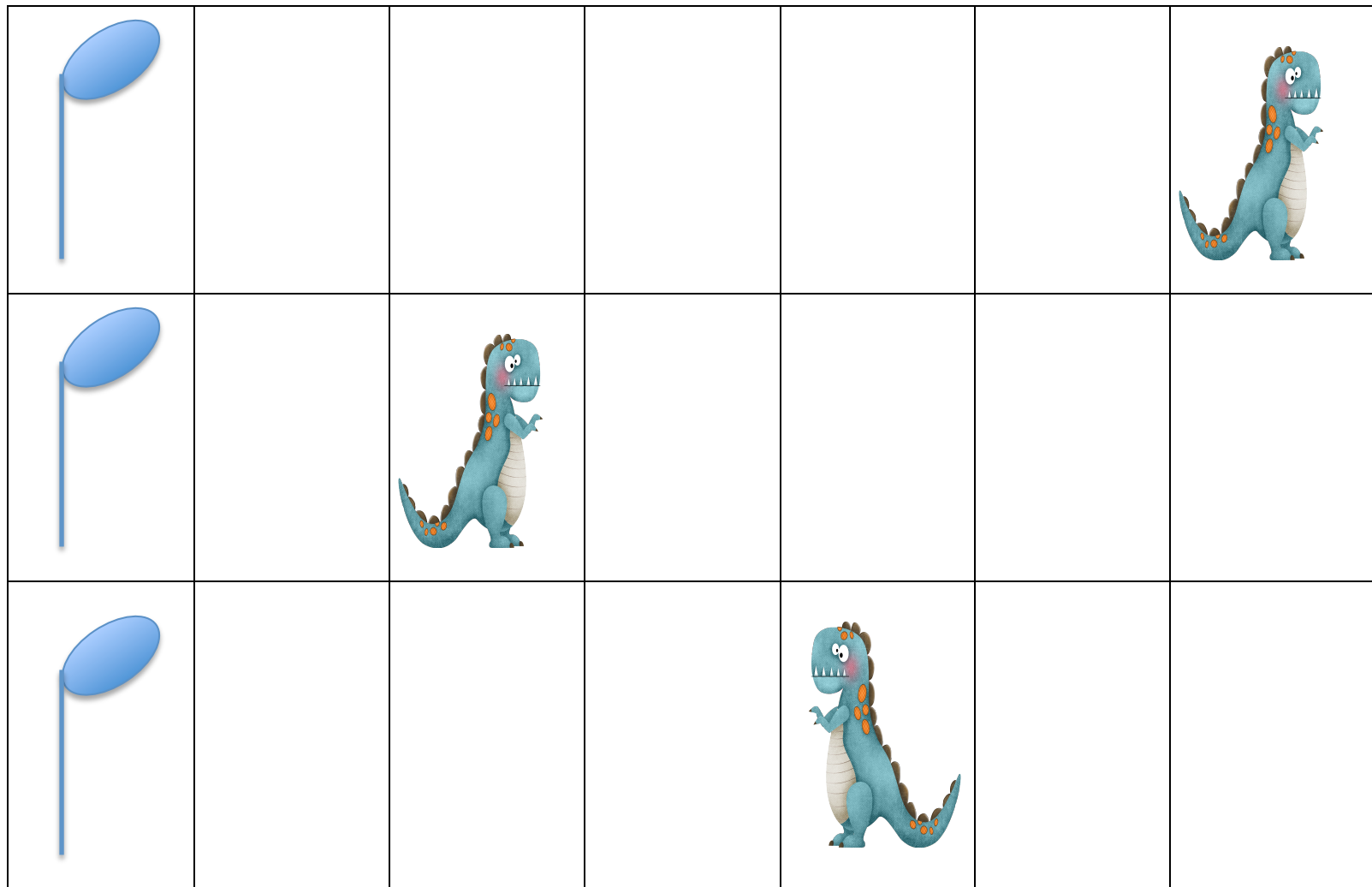


Let's Draw Some Music Notes!

YES	No	No	No	No
Oval is tilted up to the right. Stem is just right.	The circle should be an oval.	The oval is tilted the wrong way.	The stem is too long.	The stem is too short.
 <p>This line is called a STEM.</p>				

Trace the notes below. Then draw more just like it.
Don't draw over the dinosaurs!

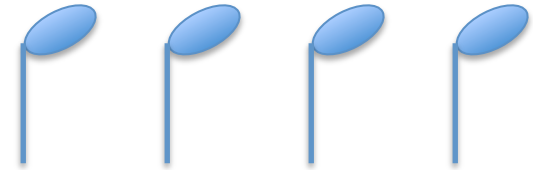
1. Draw an oval. Make sure the oval tilts the right way!
2. Draw the stem so that it is not too long nor too short.



Please send feedback to Andrea Yun, ayun@umich.edu

Draw smaller notes!

Trace these four notes and color in the note heads (circles):



Now draw 20 notes in the bubble.
The notes will be coming out of
this man's cello! Try to
keep all of the notes
the same size.

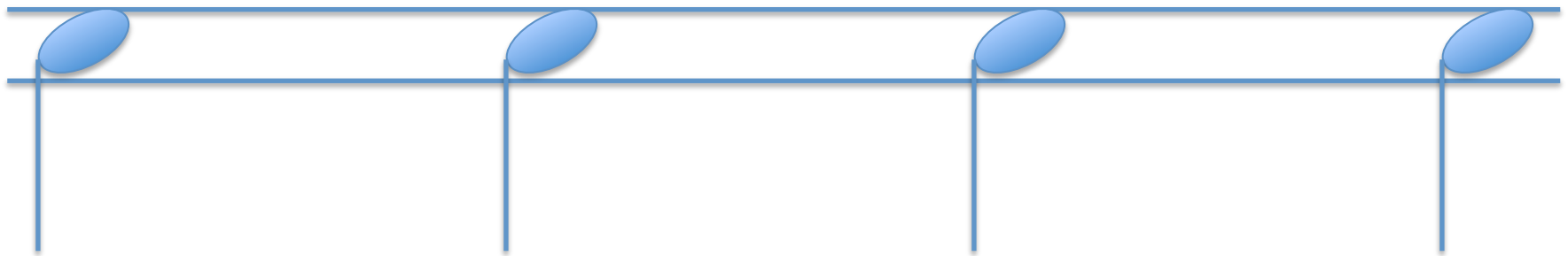


Please send feedback to Andrea Yun, ayun@umich.edu

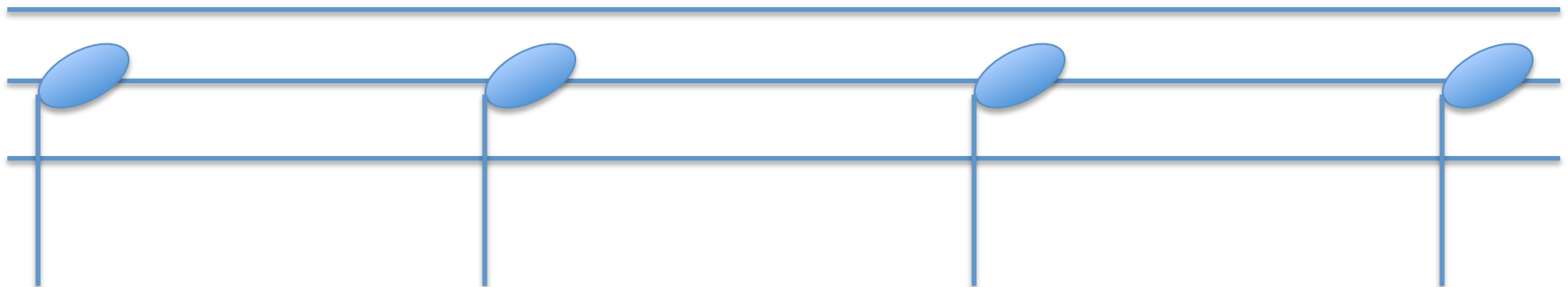


“Line” and “Space” Notes

These notes are on a space. Trace the notes, and then draw “space” notes in between the notes you traced. “Space” notes should touch the line above and below it, but not go past those lines.

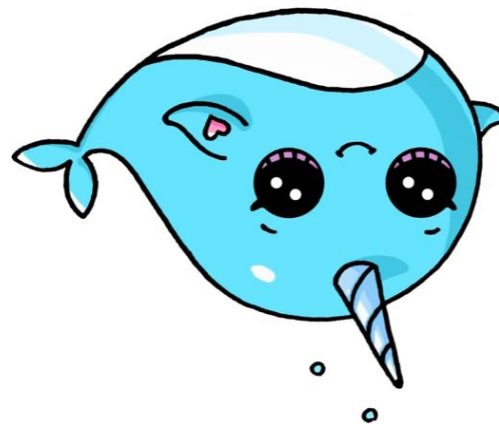


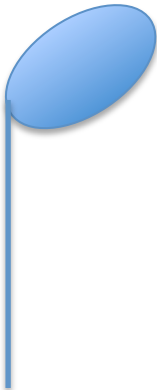

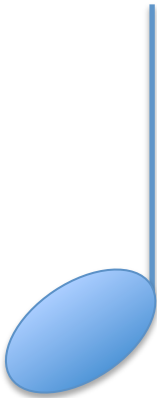

These notes are on a line. Trace the notes, and then draw “line” notes in between the notes you traced. “Line” notes should have a line going through the middle of the note. “Line” notes shouldn’t touch more than one line!





Stem Direction



YES	NO	YES	NO
Stem goes down from the left side.	Stem is on the wrong side.	Stem goes up from the right side.	Stem is on the wrong side.
			

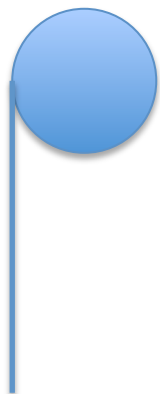
Find the Mistake!

Each note below is wrong in some way.
Circle what is wrong with each note, and write what is wrong.

Remember:



- Down from the Left
- Up from the Right

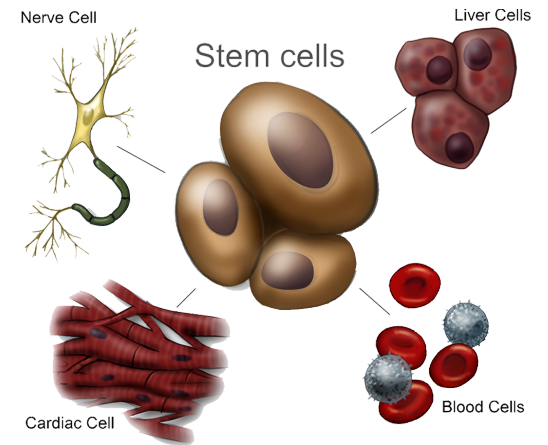


Draw Stems

Draw one stem on each note below. Make some stems go up, and make some go down. Remember:



- Down from the Left
- Up from the Right



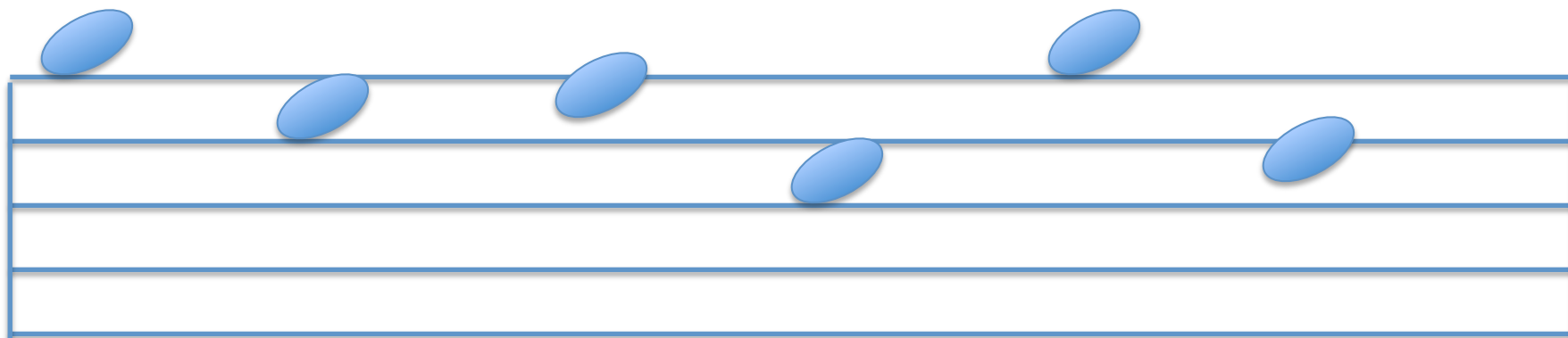


Stem Direction, Part 2

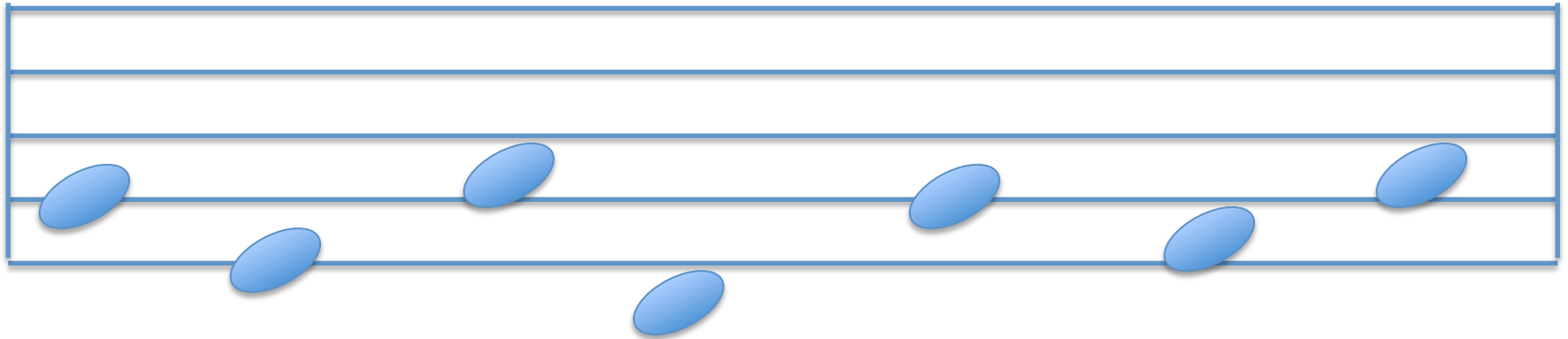
Stems should always point towards the middle line.



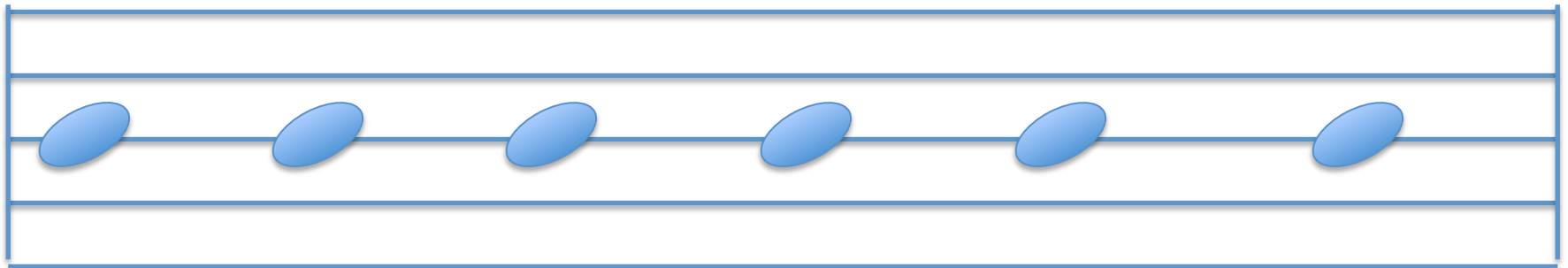
If the note is above the middle line, the stem points down.
Add stems pointing down from the left:



If the note is below the middle line, the stem points up.
Add stems pointing up from the right:



If the note is ON the middle line, the stem can go either way.
You decide the stem direction. Just remember, up from the right, down from the left!



Draw your own notes

First, draw your ovals. Make sure it looks like this one:



and not like this one:



Then add the stems! Remember:



- Down from the Left
- Up from the Right



All the stems should point towards the middle line. If the note is on the middle line, the stem can go either way.



Please send feedback to Andrea Yun, ayun@umich.edu