

Stem Direction

Q: Which way do the stems point?

A: Towards the middle line.

Q: What about notes ON the middle line?

A: Then the composer can pick the stem direction.

Q: How long should I draw the stems?

A: So that they touch about three staff lines.

Q: Does the stem go on the right or left side?

A: Down from the left side of the note, and up from the right.

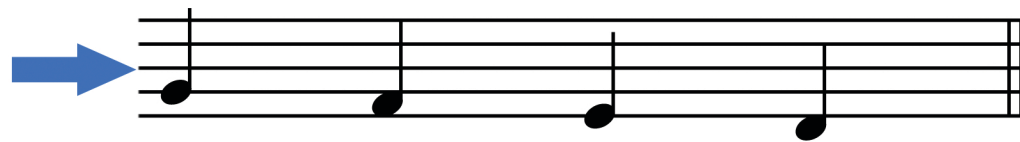


These notes are above the middle line,



so stems point down.

And these are below the middle line,



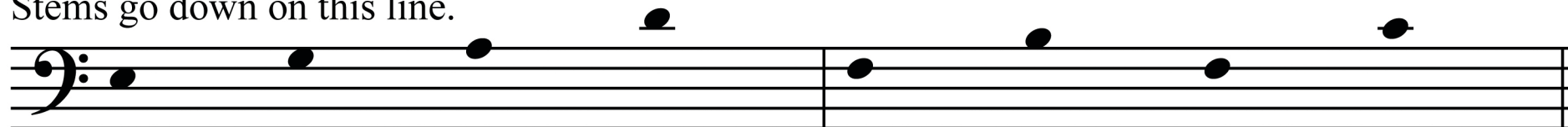
so the stems point up.

Draw stems on these notes!

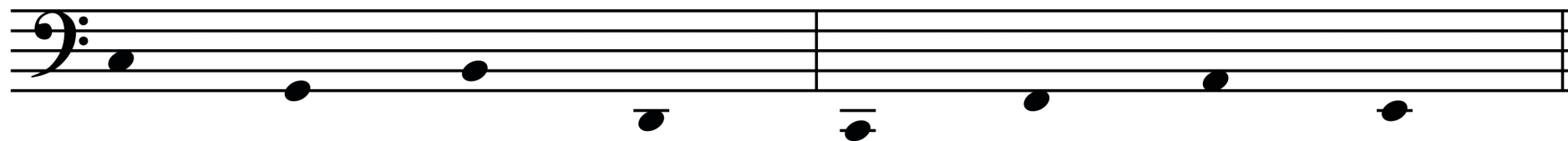
Look out for: 1) Up or down? 2) Left or right? 3) How long?

If you're not sure, look at the previous page.

Stems go down on this line.



Stems go up on this line.



Choose stem direction on these three lines.

