

# Draw More Notes

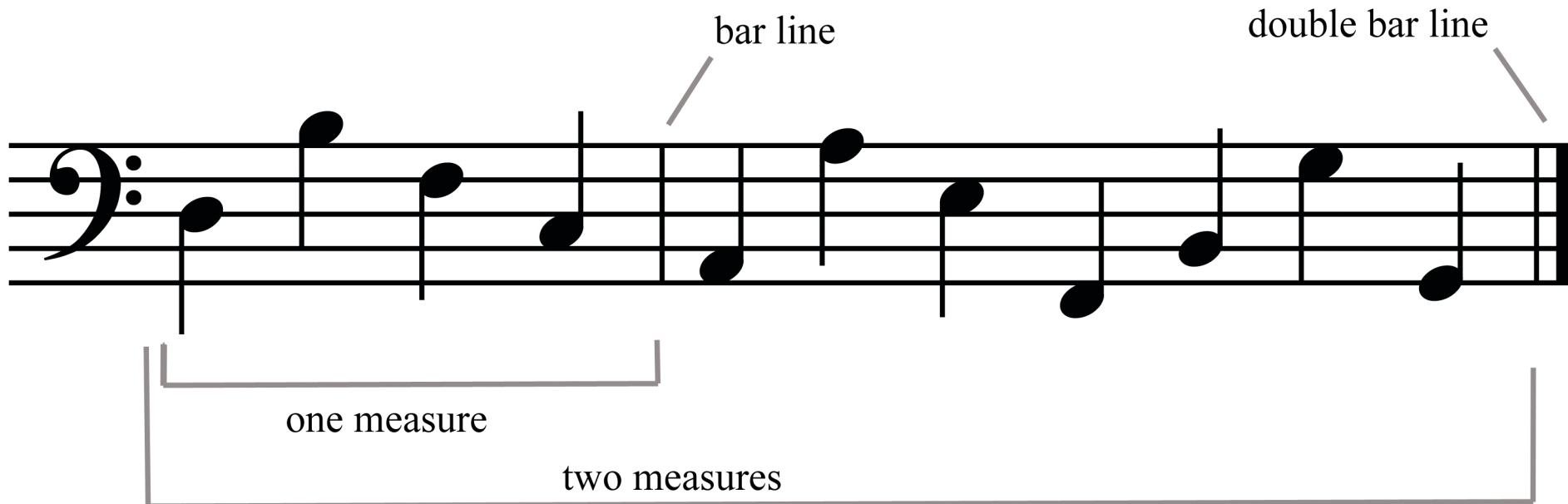
A "measure" is the space between two "bar lines."

At the end of every piece is a "double bar line."

Sometimes a measure is called a "bar."

Sometimes a measure has many notes.




Sometimes a measure only has one note.

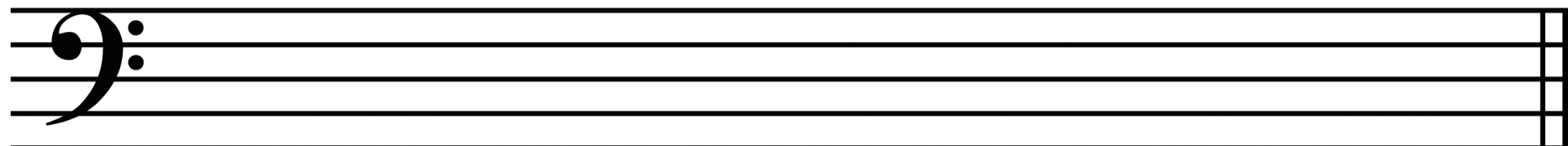
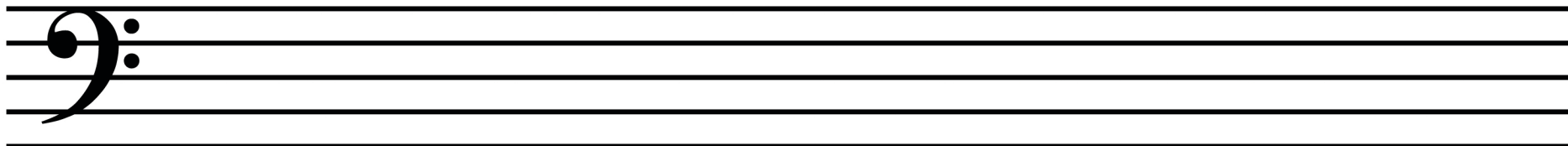
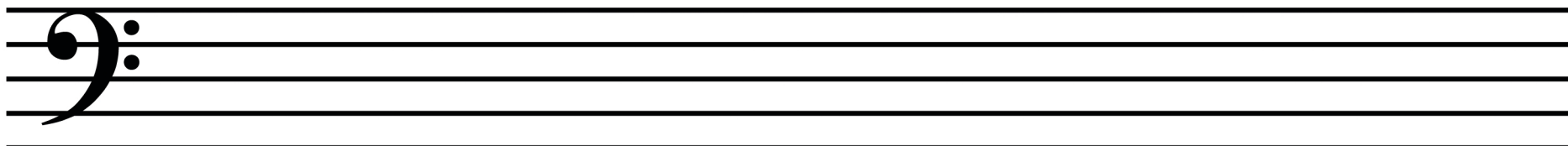


Draw notes and bar lines in the staves below.

Watch out for your stem direction!

Remember:

 <ul style="list-style-type: none"><li>• Down from the Left</li><li>• Up from the Right</li></ul>		 
--	---	---



Answer these questions:

How many measures did you create? \_\_\_\_\_

How many notes are on this page? \_\_\_\_\_