

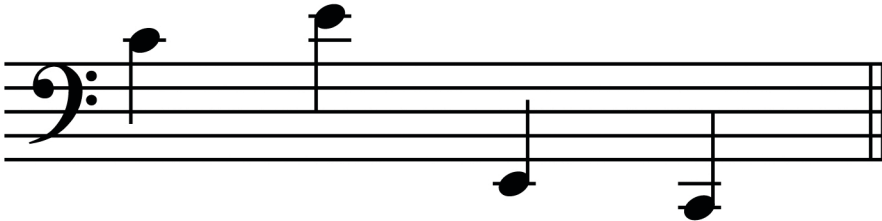
Ledger Lines



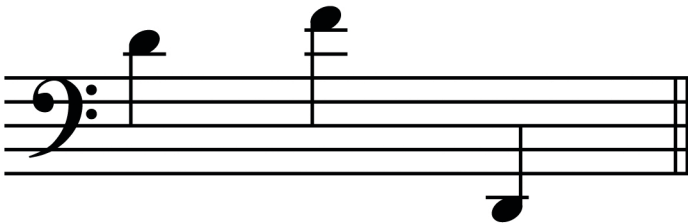
The 5 lines to the left are called the “staff.”

Plural of “staff” is “staves.”

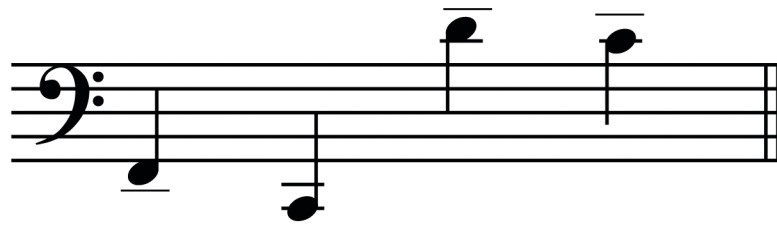
Any small line outside of a staff is a “ledger line.”



“Line” notes go right on a ledger line.



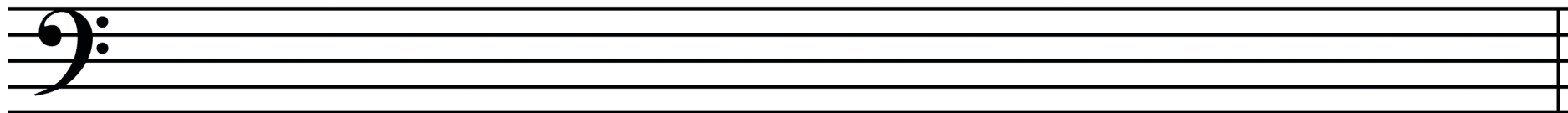
“Space notes go above or below a ledger line.



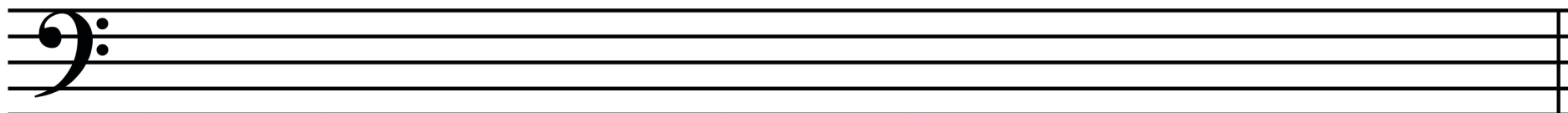
A ledger line should never go past the note.



Draw EIGHT notes, each with ONE ledger line. Draw both "line" and "space" notes. Make sure the stems are drawn correctly.



Draw EIGHT notes, each with TWO ledger lines. Use "lines" and "spaces," and watch those stems!



Draw as many notes and as many ledger lines as you please!

